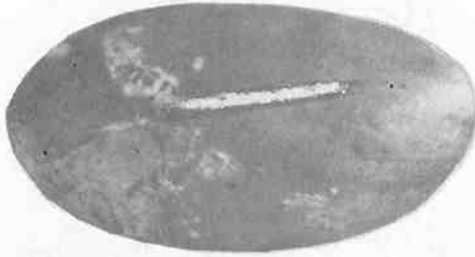


## NEW DISCOVERIES

by  
Katheryne Kay

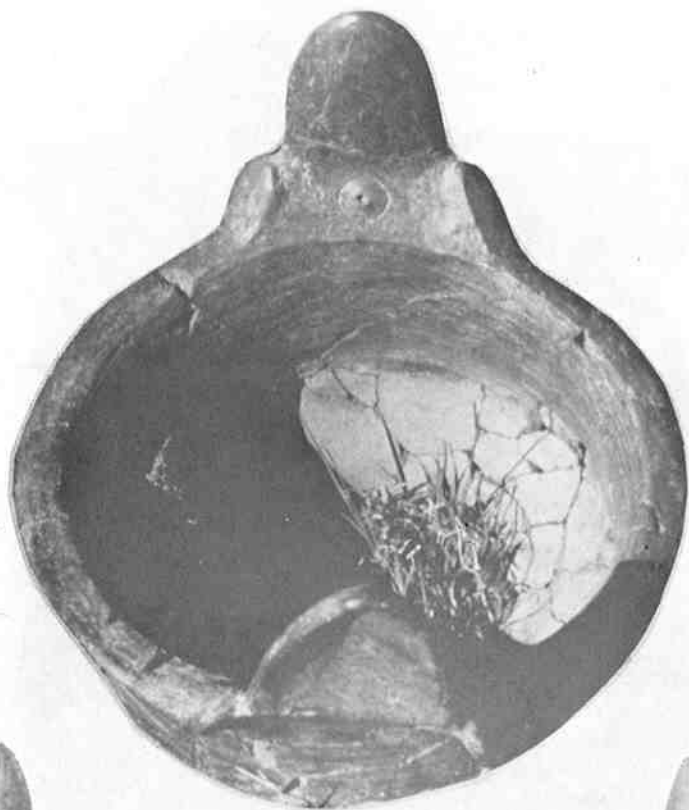


Actual Size

**MOTHER-OF-PEARL EYE PIECE** — this unique and interesting specimen is from Indian Creek, Antigua (R2, Level 3). Dr. Abraham Pollen, Ophthalmologist, Harvard Medical School has examined photographs of it and has commented that it is a “stenopaic slit” which is still used today in modern ophthalmology to test for astigmatism or refractive errors in vision like near or far-sightedness. The slit will improve distance vision in normal, near and far-sighted individuals by eliminating peripheral aberration of rays of light entering the eye and by increasing the depth of focus. Dr. Pollen thinks its main function may have been to cut glare but may also have been used to improve vision (or correct it). It is known that North American, Mesoamerican and Arctic Indians used this principle but until now it was unknown in the Caribbean to our knowledge.

(opposite page)

**DOG-EARED VESSEL** — this specimen comes from the site of Indian Creek, excavation X. Level 5 (100-125cm). It was excavated and carefully reconstructed by Ogden P. Starr just recently. Since its discovery Mr. Starr and Mr. Nicholson, of the Antigua Archaeological Society, have noted several other handles of this type in “other shapes, some not so tall, nearly round, and some rectangular” that would also stand erect on the rims of vessels. Mr. Nicholson also comments that “this positioning is very functional, as it keeps the handles from getting too hot over the fire and keeps the hands free from flame on taking the pot off the fire.” It has been noted that “pots associated with these handles appear to be blackened by fire.” Comments by other workers in the field would be appreciated to delineate the distribution of this type of handled vessel in the Caribbean.



5 cm





**THE FOLMER-ANDERSON PORTFOLIO** — Recently re-discovered from the depths of the Folmer-Anderson Collection, in the care of the National Park Service, Christiansted, St. Croix, U.S. Virgin Islands, were a collection of over 200 original color drawings by the late Mr. Folmer-Anderson depicting Igneri and Taino artifacts uncovered by him on St. Croix over 50 years ago.

“Jar drawn from a fragment excavated at Richmond. 1/8” hole bored through the head. Thickness of the bottom and the lower part of the jar 5/16”. Object A-466.”



“Bowl drawn from a fragment excavated at Estate St. Georges.  
Type: painted after firing.” Object A-247. White-on-Red.



Detail of handle.



“Bowl drawn from a fragment excavated at Estate St. Georges.  
Type: painted after firing.” Object A-248 White-on-Red.

